



National LGBT
tobacco control network



Impact of the Network for LGBT Tobacco Control

SAMHSA Meeting
*Addressing Behavioral Health
Needs of LGBT People*

June 29, 2010

By Scout, Ph.D.

LGBTTOBACCO.ORG



National LGBT
tobacco control network

National LGBT Tobacco Control Network

Funded as one of six tobacco disparity networks by the Centers for Disease Control and Prevention.

We are a project of The Fenway Institute, one of the largest LGBT healthcare organizations in the country.



Network Steering Committee



National LGBT Tobacco Control Network

Because ...

- Lesbians, gays, bisexuals, and transgenders have been targeted by the tobacco industry.
- Interventions to counter tobacco use are rarely culturally tailored for LGBTs.
- Smoking kills more people than HIV, illegal drug use, alcohol use, motor vehicle injuries, suicides, and murders combined.

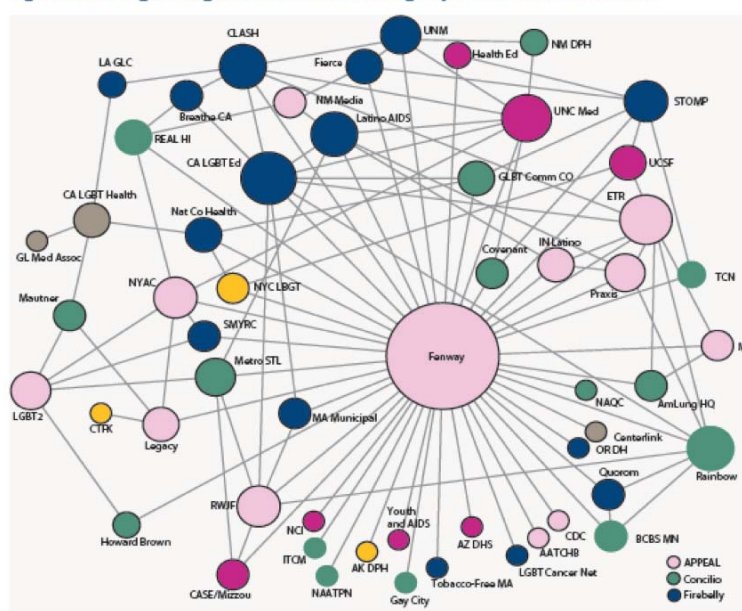




National LGBT Tobacco Control Network

The National LGBT Tobacco Control Network links people and information to help eliminate LGBT tobacco and wellness disparities.

Figure 9. Exchange among LGBT Partners: the lead agency was central to the network.



Evaluation excerpt showing how we network people.



National LGBT
tobacco control network

Linking People



LGBT TOBACCO.ORG



National L.G.B.T
tobacco control network



National L.G.B.T
tobacco control network

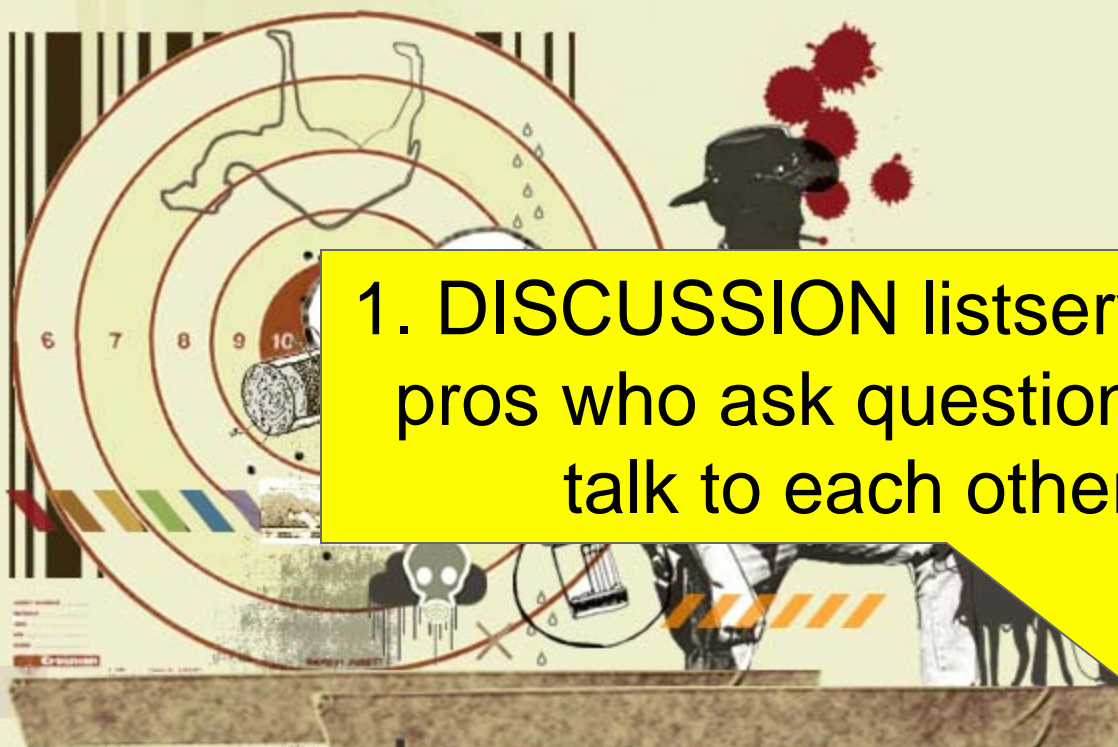
ABOUT THE NETWORK

GET OUT FROM TOBACCO

REACH OUT

COLD HARD TRUTH

RESOURCES



1. DISCUSSION listserv: 300+ pros who ask questions and talk to each other.

UPDATES

ARCHIVE

08-03-2009

Funding Opportunity: Sociological Initiatives Foundation Grants

07-30-2009

Funding Opportunity: Testing Tobacco Products Promoted to Reduce Harm

THE LOW-DOWN

THE LGBT COMMUNITY IS MORE LIKELY TO BE EXPOSED TO SMOKING THAN THE GENERAL PUBLIC.

ACTION NOW

GO SUMMIT

IES NETWORK

SEARCH

JOIN THE FIGHT

EMAIL ADDRESS

filterout | big tobacco

YOUR LOCAL



National L.G.B.T
tobacco control network



National L.G.B.T
tobacco control network

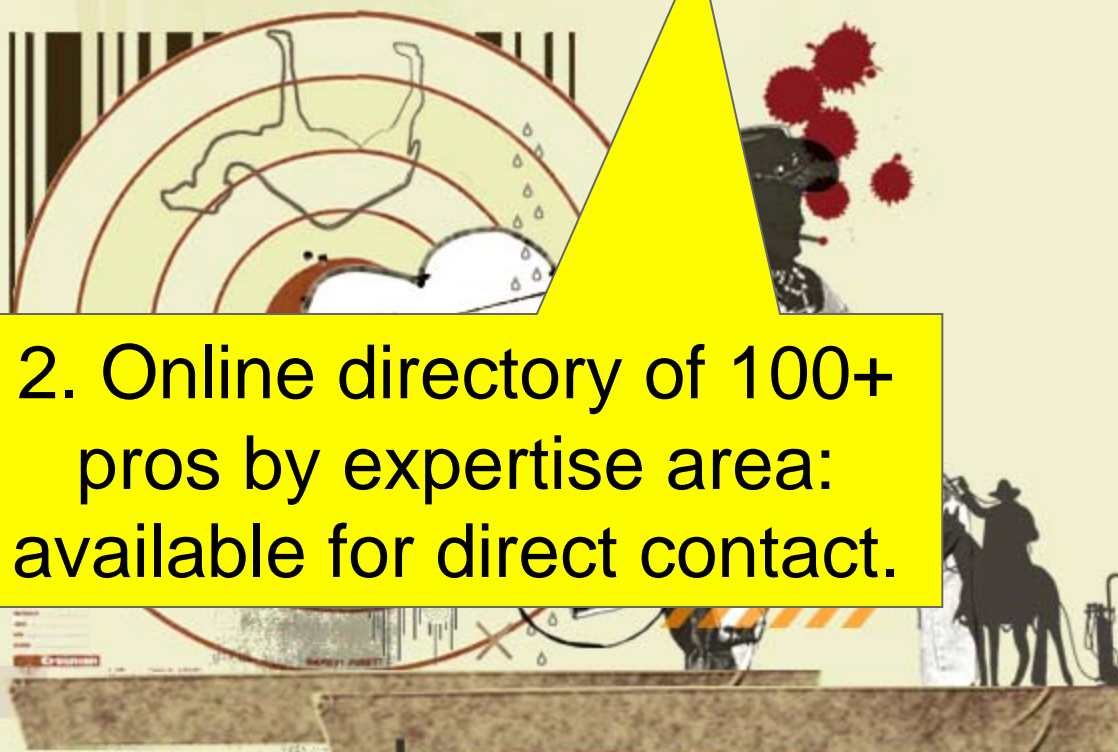
ABOUT THE NETWORK

GET OUT FROM TOBACCO

REACH OUT

COLD HARD TRUTH

RESOURCES



2. Online directory of 100+ pros by expertise area: available for direct contact.

filterout | big tobacco

YOUR LOCAL

UPDATES

ARCHIVE

08-03-2009

Funding Opportunity: Sociological Initiatives Foundation Grants

07-30-2009

Funding Opportunity: Testing Tobacco Products Promoted to Reduce Harm

THE LOW-DOWN

THE LGBTQ COMMUNITY IS 50-200% MORE LIKELY TO BE ADDICTED TO SMOKING THAN THE GENERAL PUBLIC.

TAKE ACTION NOW

TOBACCO SUMMIT

DISPARITIES NETWORK

SEARCH

JOIN THE FIGHT

EMAIL ADDRESS



National L.G.B.T
tobacco control network



National L.G.B.T
tobacco control network

ABOUT THE NETWORK

GET OUT FROM TOBACCO

COLD HARD TRUTH

RESOURCES



filterout | big tobacco

UPDATES

ARCHIVE

08-03-2009

Funding Opportunity: Sociological
Initiatives Foundation Grants

07-30-2009

Funding Opportunity: Testing
Tobacco Products Promoted to
Reduce Harm

3. Social networking stake
Facebook: 1160 friends
Twitter: 869 followers

SEARCH

JOIN THE FIGHT

EMAIL ADDRESS

LGBT TOBACCO.ORG



National LGBT
tobacco control network

And information...



LGBT TOBACCO.ORG



National L.G.B.T
tobacco control network



National L.G.B.T
tobacco control network

ABOUT THE NETWORK

GET OUT FROM TOBACCO

REACH OUT

COLD HARD TRUTH

RESOURCES



4. NEWS listserv: 800 people who get bimonthly newsletter

UPDATES

ARCHIVE

08-03-2009

Funding Opportunity: Sociological Initiatives Foundation Grants

07-30-2009

Funding Opportunity: Testing Tobacco Products Promoted to Reduce Harm

THE LOW-DOWN

THE LGBTQ COMMUNITY IS 50-200% MORE LIKELY TO BE ADDICTED TO SMOKING TOBACCO THAN THE GENERAL PUBLIC.

ACTION NOW

GO SUMMIT

IES NETWORK

SEARCH

JOIN THE FIGHT

EMAIL ADDRESS

filterout | big tobacco

YOUR LOCAL



National L.G.B.T
tobacco control network



National L.G.B.T
tobacco control network

ABOUT THE NETWORK

GET OUT FROM TOBACCO

REACH OUT

COLD HARD TRUTH

RESOURCES



filterout | big tobacco

UPDATES

ARCHIVE

08-03-2009

Funding Opportunity: Sociological Initiatives Foundation Grants

07-30-2009

Funding Opportunity: Testing Tobacco Products Promoted to Reduce Harm

THE LOW-DOWN

COMMUNITY IS MORE LIKELY TO BE EXPOSED TO SMOKING TOBACCO THAN THE GENERAL PUBLIC.

ACT UP NOW

GO TO THE SUMMIT

JOIN THE NETWORK

SEARCH

JOIN THE FIGHT

EMAIL ADDRESS

5. Direct mailings to list of 1200+ policymakers and community advocates



National L.G.B.T
tobacco control network



National L.G.B.T
tobacco control network

ABOUT THE NETWORK

GET OUT FROM TOBACCO

REACH OUT

COLD HARD TRUTH

RESOURCES



6. Online resource library with hundreds of local and national items.

UPDATES

ARCHIVE

08-03-2009

Funding Opportunity: Sociological Initiatives Foundation Grants

07-30-2009

Funding Opportunity: Testing Tobacco Products Promoted to Reduce Harm

THE LOW-DOWN

THE LGBTQ COMMUNITY IS 50-200% MORE LIKELY TO BE EXPOSED TO SMOKING TOBACCO THAN THE GENERAL PUBLIC.

ACT UP NOW

GO SUMMIT

RESOURCES NETWORK

SEARCH

JOIN THE FIGHT

EMAIL ADDRESS

filterout | big tobacco

YOUR LOCAL

LGBT TOBACCO.ORG



The Network for LGBT Tobacco Control

7. Blog (4000+ views)

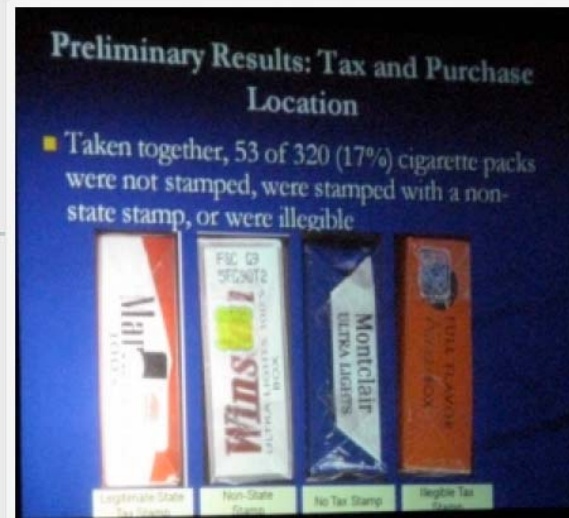
Tobacco Trends in Next Five

by Scout
Director, National LGBT Tobacco Control Network

Hey y'all, we're at the closing plenary of the CDC tobacco conference listening to Dr. Andrew Highland give an update of tobacco trends over the next five years. Let me try to match this guys speedtalking with some speednotetaking, ok? (and mucho gracias to him for the visuals in this post).

Tobacco Trends in Next Five Years

1. More taxes! Currently my tiny home state, lil Rhody, leads the country in cig taxes with a lovely \$3.46/pack tax. But... seems like we're behind the world on average and sincethey've found this is one of themost effective tools to help motivate folk to quit, we're gonna see more and more. Now if they'd just also use the money for cessation, or even just public health bans.
2. More tax evasion and illegal cigarette commerce. Interesting concept, eh? The speaker gave the example that if he took the rear seats out of his minivan then loaded it with cigarettes from a tax free state then took them to NY, he'd clear about \$25k in one run. And as he noted, the penalties are relatively minor. In fact, in a recent study they found that 17% of a representative sample of submitted cigarette packs didn't have their appropriate tax stamps.
3. More clean indoor air policies – again to reiterate the main point of the recent Institute of Medicine report, passing a good clean indoor air policy alone can decrease 1/5 of the heart attacks in the region. This is big, and how big it is is relatively

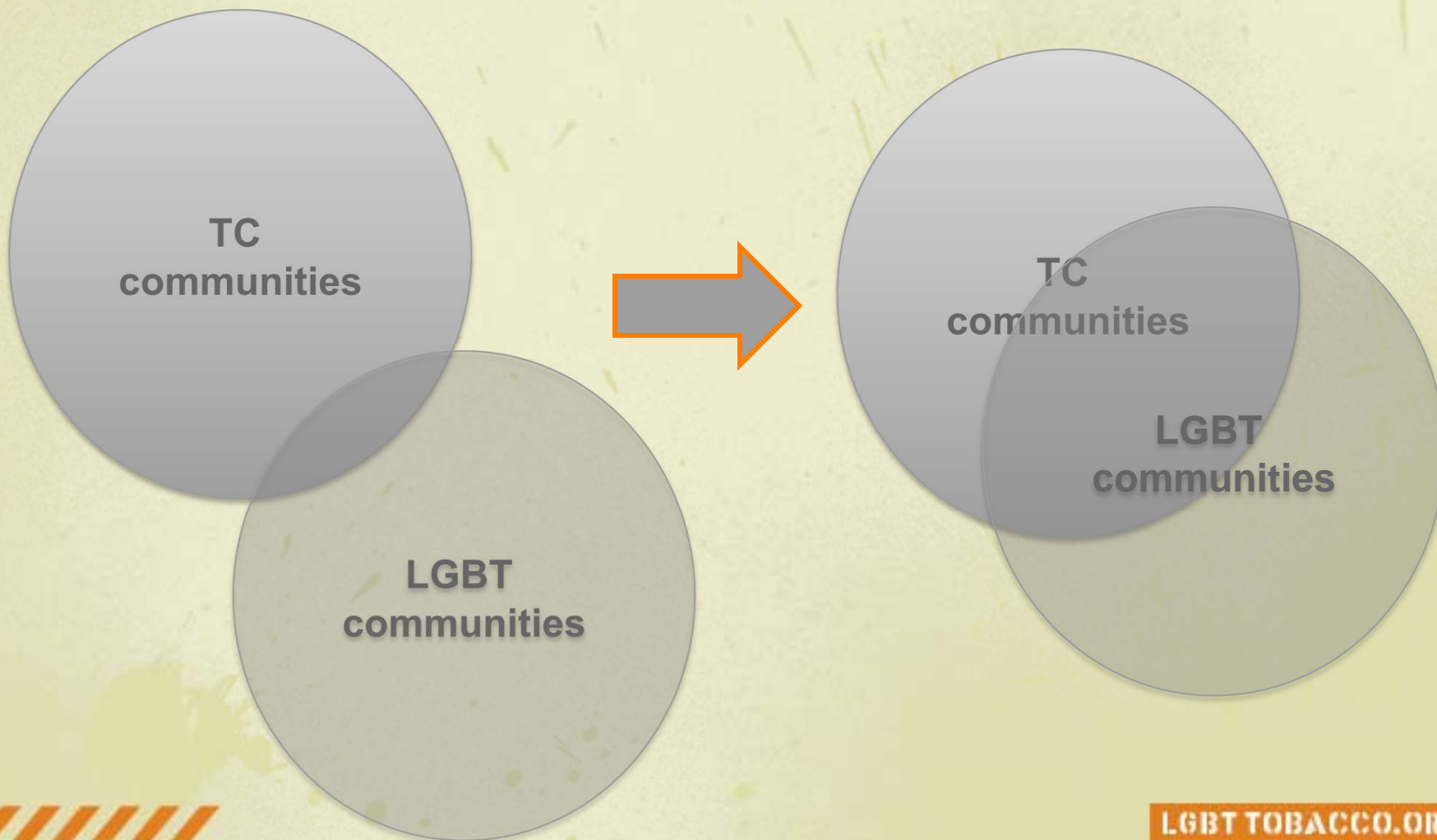


Examples of the 17% of cigs that don't have appropriate tax labels.





Our aim?





National LGBT
tobacco control network

Impacts



LGBT TOBACCO.ORG



Federal level

- Successful advocacy for HP2020 LGBT Workgroup
- Successful convening of HHS LGBT Task Force
- Joint disparity network priority statement for ARRA funding
- Ongoing resources/advocacy for federal LGBT data collection:
 - *LGBT Data Collection and Surveillance Briefing Paper*
 - *Cognitive Testing of LGBT Surveillance Question*
 - *Moving Forward with LGBT Health*





National L G B T
tobacco control network

Federal level



National L G B T
tobacco control network

LGBTTOBACCO.ORG



Moving Forward with LGBT Health: First Steps for the Federal Government

NATIONAL ADVISORY COUNCIL

American Cancer Society
American Lung Association
American Legacy Foundation
Americans for Nonsmokers Rights
Callen-Lorde Community Health Center
Campaign for Tobacco Free Kids
Chase-Brexton Health Services
CLASH
Fenway Community Health
General Lesbian Medical Association

Problem statement

Studies over decades have consistently shown that LGBT people experience increased health risk factors based partially on reduced access to health care. Some of these disparities are quite pronounced: for example, smoking rates in the LGBT community range from 35% to almost 200% higher than the general populationⁱ. Concomitant access to care problems are also disturbingly common. For example, the National Gay and Lesbian Task Force just released a national study showing that 25% of transgender people report being denied healthcare specifically because they are transgender.ⁱⁱ

In 2010 the federal government expects to spend \$879 billion dollars on health.ⁱⁱⁱ A key goal of this spending is to increase overall health and decrease health disparities. The process of addressing health



LGBTTOBACCO.ORG



Federal level

- Addition of smoking questions to historic transgender needs assessment sponsored by National Gay and Lesbian Task Force
- The following data are being debuted prior to the report publication. Please give your card to me if you'd like the final report sent to you in late Summer 2010.





Data debut:

TG Community Needs Assessment

- TG population smoking prevalence is 30% (or 50% higher than the general population)
- People who've lost a job due to anti-trans bias? 38%
- People involved in street economies? 51%
- People who can pass easily? 27%
- People who can't pass? 37%
- People who have all congruent identity documents? 25%
- People who have none? 34%





Data debut: TG Community Needs Assessment

Smoking prevalence rates for:

- Black: trans people - 50% v. general population - 20%
- Latino trans people and multiracial: 37%

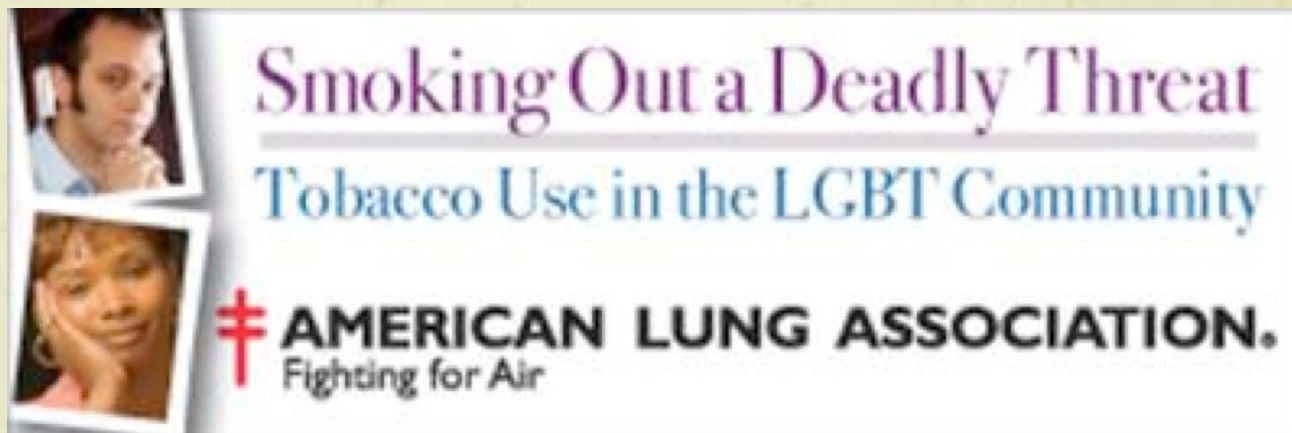
These are some of the 1st national data supporting the hypothesis that LGBT people of color smoke at increased rates over both their race referent group and their sexual/gender minority referent group.






Federal level

- Variety of Network experts participated and drove creation of American Lung Association's report: *Smoking Out a Deadly Threat: Tobacco Use in the LGBT Community*





State level




LGBTTOBACCO.ORG

THE FENWAY INSTITUTE

1340 Boylston Street, 8th Fl
Boston, Massachusetts
02115

TELEPHONE 617-927-6451
FACSIMILE 617-267-0764
www.thefenwayinstitute.org



the NETWORK
For LGBT tobacco control

Promising Practices for Comprehensive Tobacco Control Programs

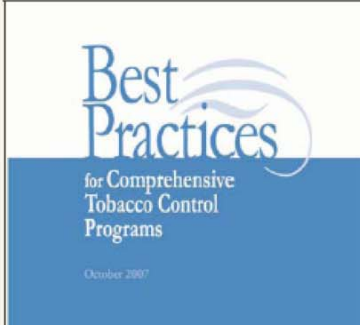
Identifying and Eliminating LGBT Disparities

CDC's Best Practices document gives the following guidelines:

Identifying and Eliminating Tobacco-Related Disparities

**NATIONAL
ADVISORY COUNCIL**

American Cancer Society
American Lung Association
American Legacy Foundation
Americans for Nonsmokers Rights
Callen-Lorde Community Health Center
Campaign for Tobacco Free Kids
Chase-Brexton Health Services
CLASH
Fenway Community Health
Gay and Lesbian Medical Association
Howard Brown Health Center
LA Gay and Lesbian Center
Legacy Community Health Services



Best Practices
for Comprehensive
Tobacco Control
Programs

October 2007

Activities to support reaching this goal may include:

- Conducting a population assessment to guide efforts
- Identifying and assembling a diverse and inclusive stakeholder group
- Prioritizing reduction in tobacco-related disparities and assessing capacity
- Developing a strategic plan
- Funding community organizations to implement proven or promising interventions
- Providing culturally competent technical





State level

- Creation of State Promising Practices guidelines
- Cultural competency trainings with state DOH staff in AK, CA, HI, IN, TX, KS, IA, OH, PA, WV, and more...
- Development and offering of cultural competency training to state tobacco quitline vendors
- Individual TA with states to secure LGBT community contacts, advisors, and grantees (example: AZ)
- Routine TA presentations/webinars for state policymakers (example: GA)





National LGBT
tobacco control network

**freedom. to speak.
to choose. to marry.
to participate. to be.
to disagree. to inhale.
to believe. to love.
to live. it's all good.**



*the people of santa fe natural
tobacco company*

No additives in our tobacco
does **NOT** mean a safer cigarette.

**SURGEON GENERAL'S WARNING: Smoking
By Pregnant Women May Result in Fetal
Injury, Premature Birth, And Low Birth Weight.**

www.nascigs.com

© SPNTC 2 Natural American Spirit® is a registered trademark of Santa Fe Natural Tobacco Company.

LGBT TOBACCO.ORG



National L.G.B.T
tobacco control network

Local Level





Local Level

- Thriving growing diverse group of professionals/experts/advocates that share information and are amazingly dedicated to this issue. (130 at last conf)
- Retention of people in the arena who are cycled out of direct projects
- Local LGBT agencies assisted in developing new tobacco control proposals/projects (through webinars and toolkit; 20+ agencies given individual grant assistance in prior year)



Local Level

- Funneling up of local documents/publications to national portal accessible by others
- If no publication is available, we capture the wisdom in Sharing Our Lessons series.

SHARING OUR LESSONS

ISSUE 03/WINTER 2010

www.lgbttobacco.org



NATIONAL LGBT
TOBACCO CONTROL
NETWORK

Positively Smokefree:

Helping HIV + Smokers to Quit

Achievements of a Cessation
Program



In a members' own words...

“The Network has been a much needed resource and centralized place to connect. I’ve never been to more useful convenings, or have had such ready access to a national pool of experts before. I have avoided countless duplication of effort and have really strengthened the quality of our work here as a result. I have also shared much of my work for others to adopt and we have truly created a community of peers and mentors that never would have been possible otherwise.”





National L G B T
tobacco control network

Thank you!

The Network for LGBT TC looks forward to working with you to collaboratively address LGBT tobacco and wellness disparities.

Feel free to contact us whenever needed

lgbttobacco.org

lgbttobacco@gmail.com

617-927-6452

Find us @lgbttobacco on Twitter

Scout at scoutout@gmail.com or 401-267-8337



LGBT TOBACCO.ORG